



**IDEXX**

Introducing IDEXX Tecta

# About IDEXX



CAG



Water



LPD

○



- A global leader in each of our business segments
- Commitment to innovation
- Enhancing the health and well-being of pets, people, and livestock.
- Water testing solutions
- **Ensuring the safety of drinking water for over 2.5 billion people.**

# Coverage of Key Markets and Customer Segments



**Water**

Water Types	Customers
<ul style="list-style-type: none"><li>○ Drinking water</li><li>○ Ambient water</li><li>○ Ground water</li><li>○ Source/surface water</li><li>○ LT2 testing</li><li>○ Wastewater</li><li>○ Marine water</li><li>○ Dairy water</li><li>○ Hospital water</li></ul>	<ul style="list-style-type: none"><li>○ Public health laboratories</li><li>○ Utilities</li><li>○ Private laboratories</li><li>○ Bottled water</li><li>○ Industrial water producers</li><li>○ Cruise ships</li></ul>

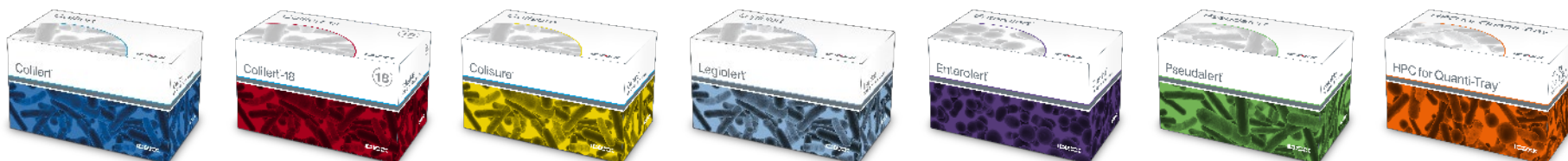


# Innovative Water Microbiology Tests

Coliform and <i>E. coli</i>	Enterococci	<i>P. aeruginosa</i>	<i>L. pneumophila</i>	Quality Control
Colilert®	Enterolert®	Pseudalert®	Legiolert®	Quanti-Cult®
Colilert®-18	Enterolert®-E	Pseudalert® 250		IDEXX-QC
Colisure®	Enterolert®-DW			
Colilert® 250	Enterolert® 250			

<i>Cryptosporidium/Giardia</i>	Heterotrophic Plate Count	Quantification	Accessories
Filta-Max®	SimPlate® for HPC	Quanti-Tray®	EZ-DPD™
Filta-Max xpress®	HPC for Quanti-Tray®	Quanti-Tray®/2000	Collection vessels
Invitrogen		Quanti-Tray®/Legiolert	Incubators
Dynabeads® for IMS			Sealers



# IDEXX Tecta

- U.S. EPA approval
- The only **rapid, automated** testing system with U.S. EPA approval
- Anywhere, anytime, by anyone





# Benefits of automation

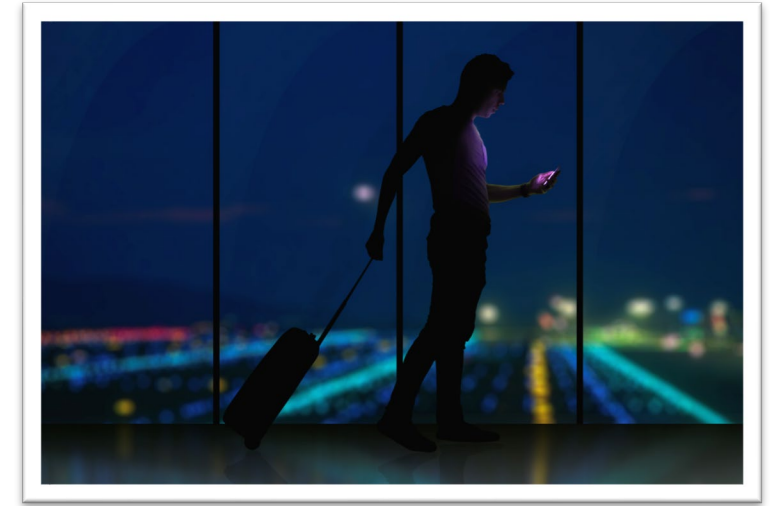
# Automation introduces flexibility to your workflow



Start a test at **anytime**

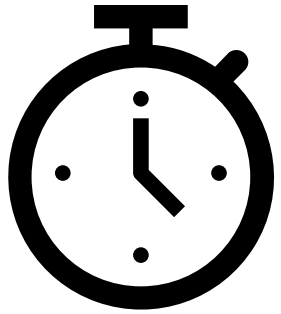


Tecta can be operated by **anyone**



Test **anywhere**

# Faster test results



Results within 2-18 hours depending on the level of bacteria in the sample, with email reporting at the time of detection.





# Automated reading and reporting of results



The reading and reporting of results is automated with Tecta. Samples are continuously read during the incubation period, with a positive or negative result sent immediately by email.

No visual reading of results: Remove human error, inconclusive results, and staffing/scheduling challenges.





# The IDEXX Tecta System

# The Tecta System

## The Instruments



## The Cartridges

1. Total Coliforms and *E. coli*
2. Rapid *E. coli*
3. *Enterococcus*
4. Fecal Coliforms



# Two Tecta instruments (different throughput capacity)



## Tecta B16

16 concurrent tests



Conduct different test types simultaneously



## Tecta B4



4 concurrent tests



Smaller footprint ideal for mobile or remote testing



A dynamic range of  $<1$  to  $10^8$  CFU / 100 mL for an undiluted sample

# Tectalert test cartridges



Sample ID, Lot # and Test Type Label

Tamper-proof closure

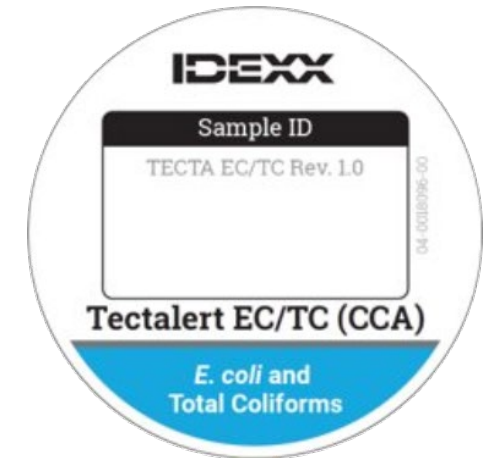
Sterile evidence closure

Embossed 100 mL fill line

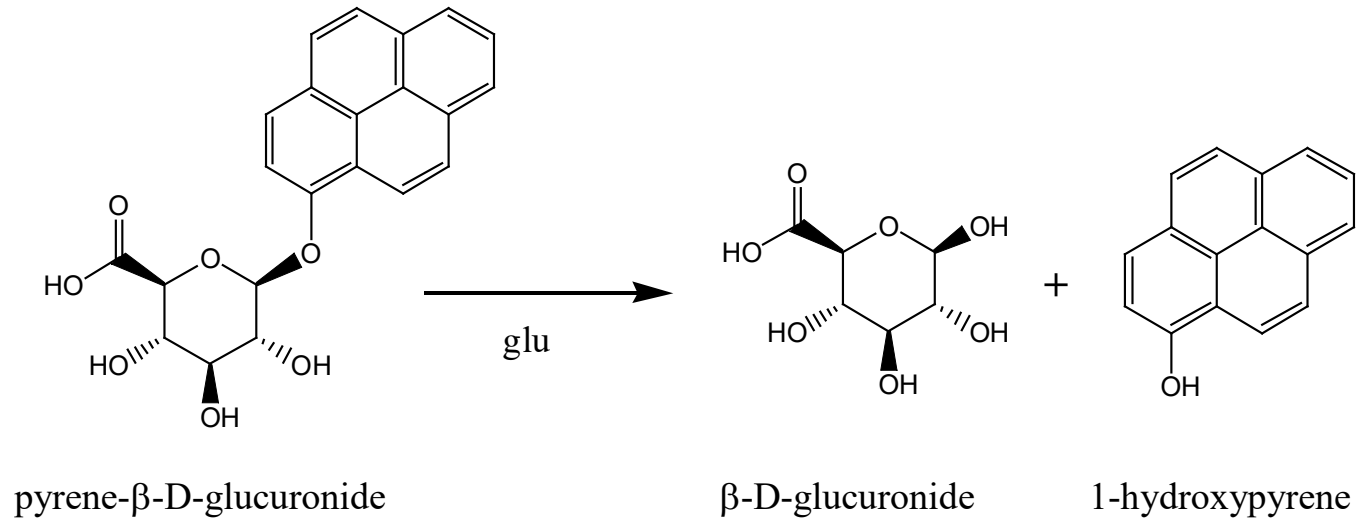
Polypropylene bottle

Granular reagents & sodium thiosulfate

Polymer probe co-molded to bottle



# Enzymatic test method



- Same indicator enzymes as other IDEXX methods
- Hydrophobic and fluorescent markers are 'extracted' from the sample and migrate through the polymer partition
- Automated detection and notification of positive results

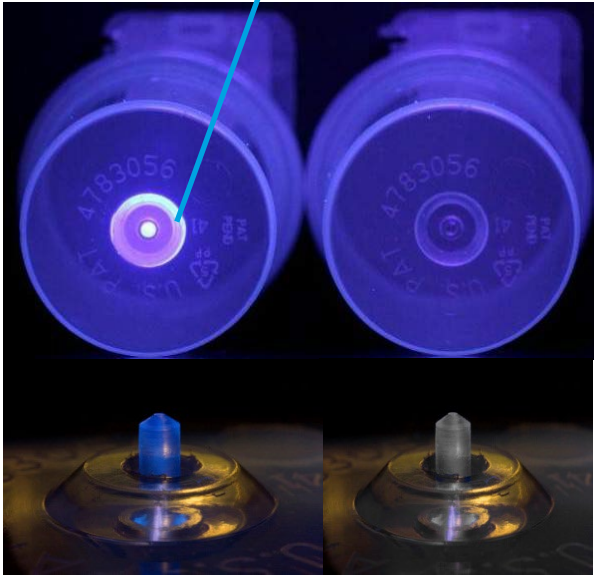


# Tectalert polymer probe concentrates the fluorescent signal

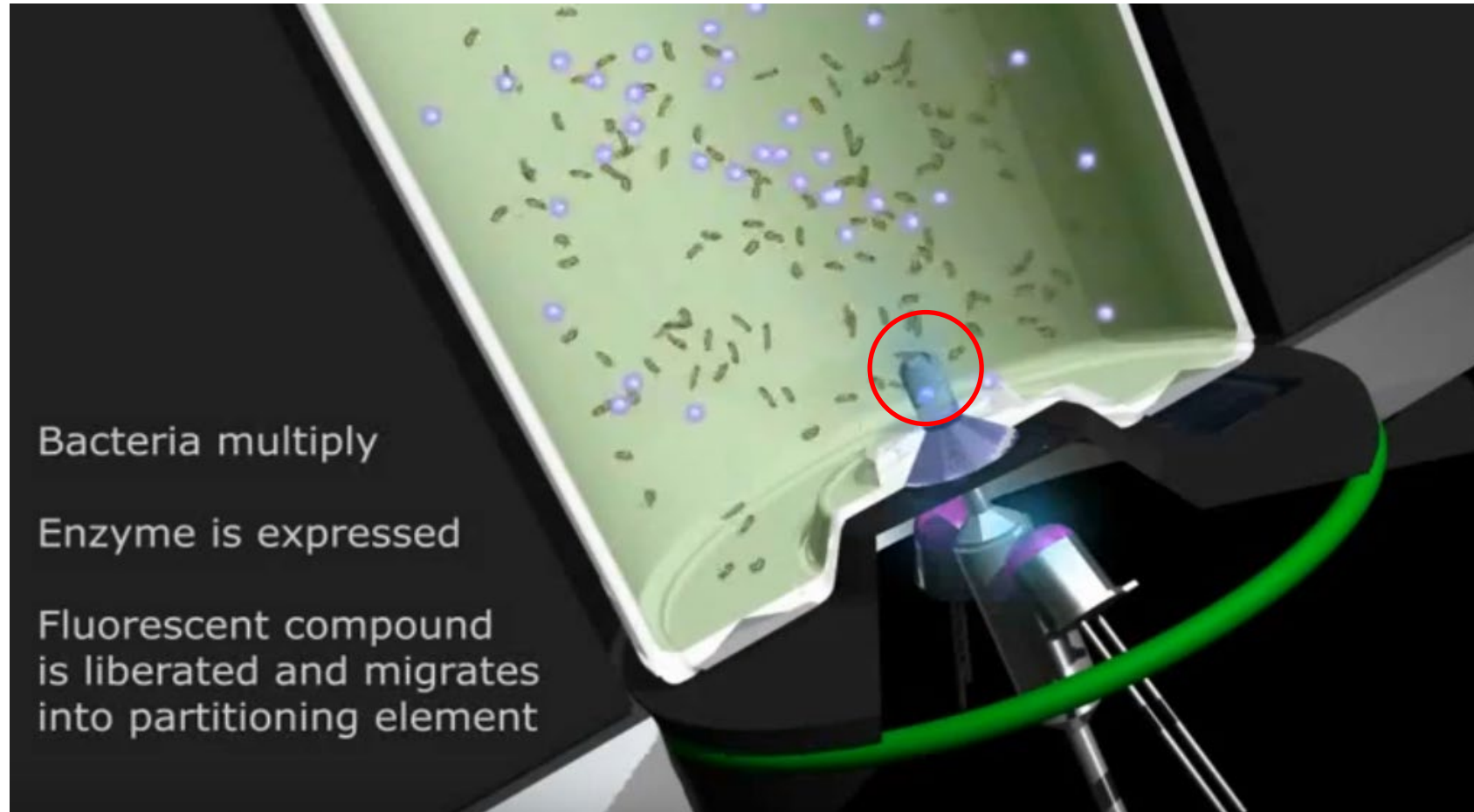


Extracting fluorescent markers outside of sample into polymer

Detection of fluorescence in polymer probe triggers the result



# Patented polymer partition technology concentrates the fluorescent markers

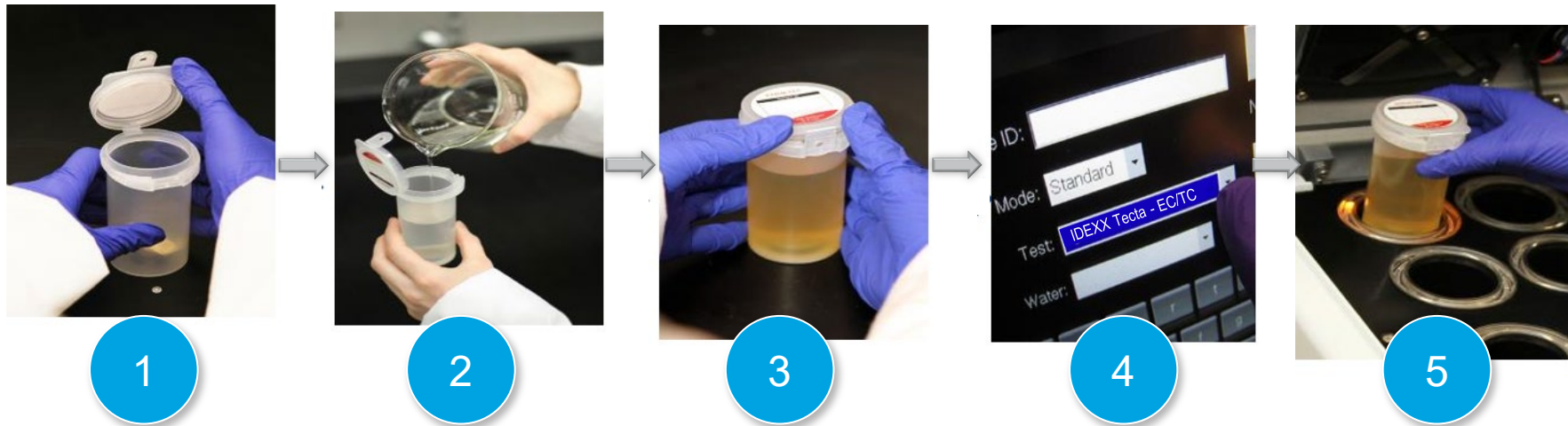






Easy to use

# Simple, fast, and easy



**Easiest and fastest method available to conduct a test by  
anyone, anywhere, at any time**

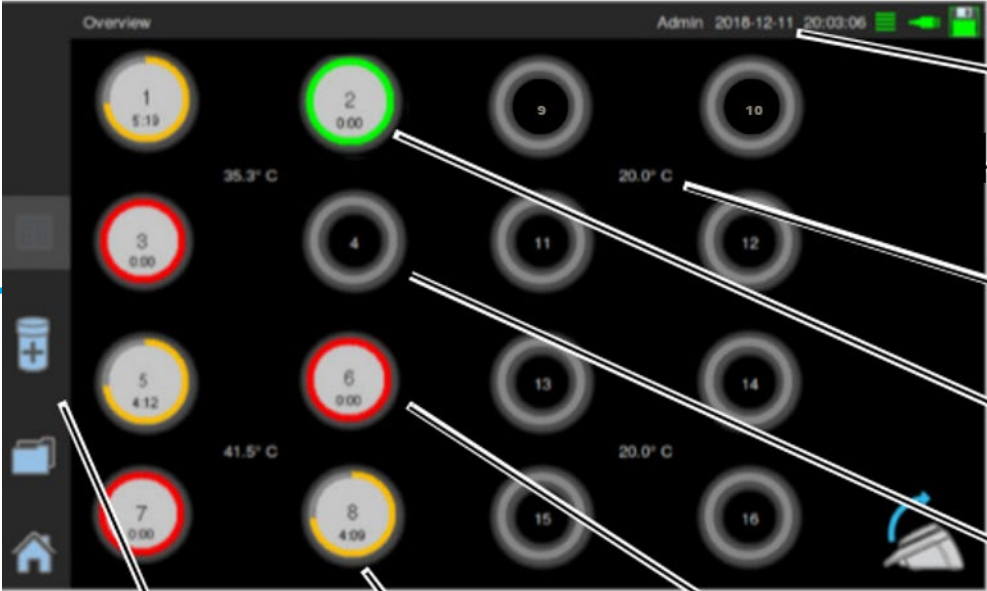
# New test menu requires just a few inputs to start testing

- 1) Enter Sample ID
- 2) Select Test Cartridge Type
- 3) Select the Water Type

The screenshot displays the IDEXX test menu interface. It features a dark background with white text and input fields. The interface is organized into several sections:

- Input Fields:**
  - Sample ID:** A text input field with a blue circle '1' next to it.
  - Mode:** A dropdown menu set to 'Standard'.
  - Test:** A dropdown menu set to 'IDEXX Tecta -EC/TC' with a blue circle '2' next to it.
  - Water:** A dropdown menu set to 'Drinking' with a blue circle '3' next to it.
  - Location:** A dropdown menu with a close button 'X' and a 'New' input field with a plus sign '+'. A blue circle '1' is also next to this section.
  - Sample Size:** A dropdown menu set to '100' and a unit dropdown set to 'ml'.
- Keypad:** A numeric keypad with buttons 1-16 and function buttons 'Reset', 'Remove All', and 'Add'.
- Navigation:** A vertical sidebar on the left with icons for a keypad, a test cartridge, a folder, and a home button.

# Simple user interface



Instrument sub-system status symbols.  
Date, time and current user

Estimated water temperature, displayed in four positions

Test complete, no coliforms detected

Test in progress, coliforms detected

Main icons

Test in progress, results not yet indicated

Test complete, coliforms detected

# Test reports include comprehensive test information

**Subject:** \*\*\*Complete: Chamber1Task CCA/EC Present; TC Present

## TECTA-B16 (2.2.3) Report

Sample ID: Raw Water

Collection Time: 2019-04-18 17:53:50

Stored: Unknown

Location: 001

Test Start Time: 2019-04-18 17:53:50

Target Temperature (C): 35.3

Actual Temperature (C): 35.41 @ 3:00 | 35.29 @ 9:00 |

Data File: XPDS00277.2019-04-18\_17.53.50\_Chamber1\_TIME.pds

Build: 22320150304

### Test Result: TECTA-CCA-EC/TC

E. coli Result: **Present**

EC Detect Time: 12h31m27s || Quantity: 1CFU/100 ml

[EC-35.5 Default Calibration rev. 1.0]

Total Coliform Result: **Present**

Total Coliform Detect Time: 12h26m19s || Quantity: 33CFU/100 ml

[TC-35.5 Default Calibration rev. 2.0]

XPDS00340.2019-12-11\_16.46.06\_Chamber1\_r... (2K)

Sample ID and details

Incubation temperature

Automatic temperature records

Test type selected

Presence / absence

Detection time and quantity of cells

CSV attachment

# U.S. EPA approval for drinking water P/A testing

“TECTA EC/TC Method” Approved by the U.S. EPA and published in the Federal Register on June 19, 2014, and updated on March 20, 2017

## Approvals:

- Total Coliform Rule
- Revised Total Coliform Rule
- Groundwater Rule

## Method Format:

- *E. coli* & total coliform presence/absence: 100 mL



[FR Doc. 2017-14940 Filed 7-26-17; 8:45 am]

BILLING CODE 6560-50-P

**ENVIRONMENTAL PROTECTION  
AGENCY**

**40 CFR Part 141**

[EPA-HQ-OW-2017-0284; FRL-9964-78-OW]

**Expedited Approval of Alternative Test Procedures for the Analysis of Contaminants Under the Safe Drinking Water Act; Analysis and Sampling Procedures**

**AGENCY:** Environmental Protection Agency (EPA).

**ACTION:** Final rule.



When is Tecta the right solution  
for your operation?

Construction testing  
or emergency  
samples (water main  
break, boil water  
notice, etc.)





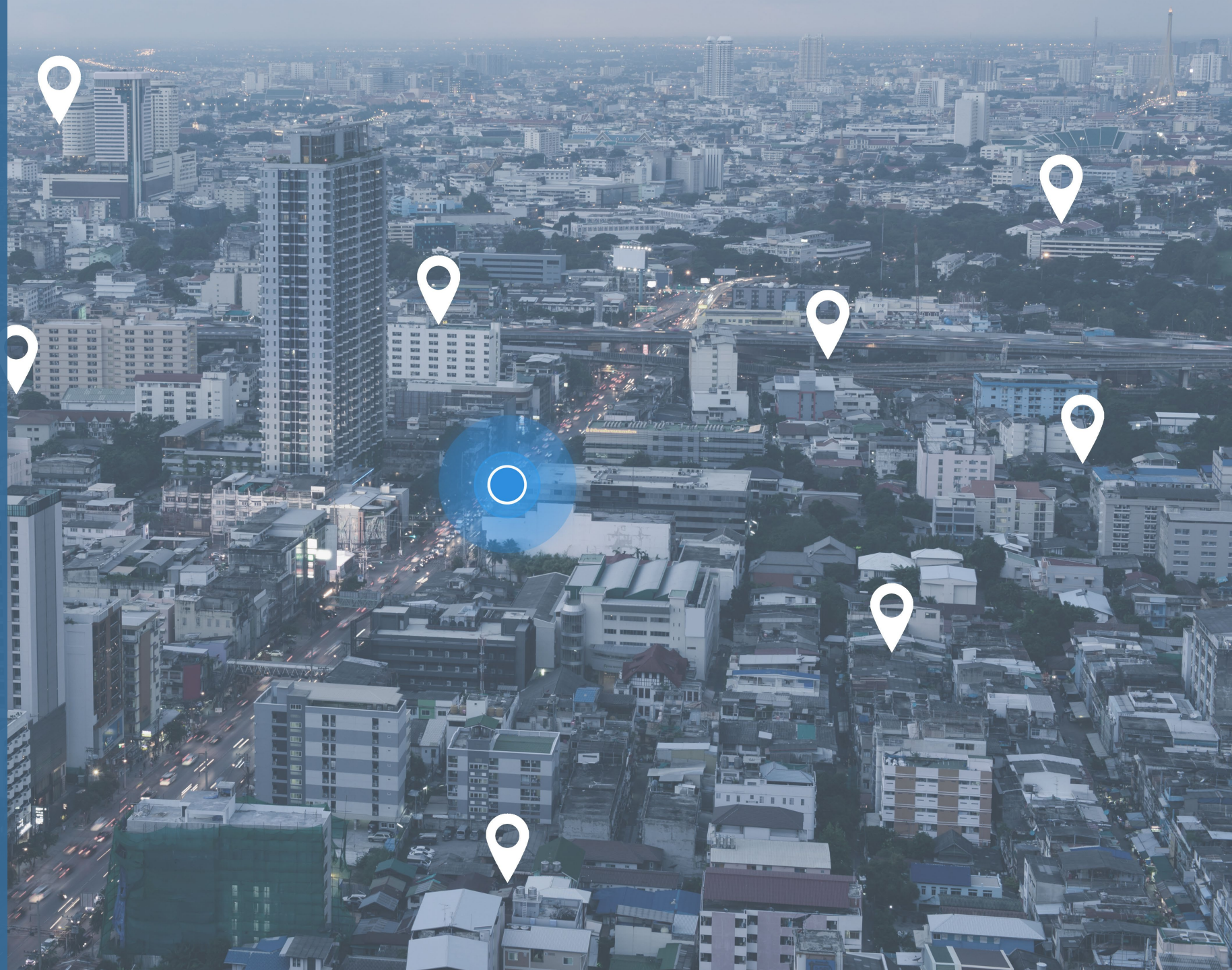


Operational testing  
at the treatment  
plant



Evening, weekend,  
and holiday testing

At remote or satellite  
locations to reduce  
sample transport  
time





Sick days,  
retirements, and  
other staffing  
challenges





Thank you